



THE CHURCH OF ENGLAND

**Kingsland CE (VA) Primary School**



# The Kingsland Times

Friday 17<sup>th</sup> September 2021

## Let your light shine

“Let your light shine before others that they may see your good deeds and glorify your Father in heaven.” Matthew 5:16

Let your light shine on our vision:

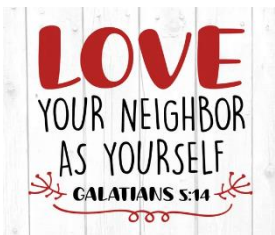
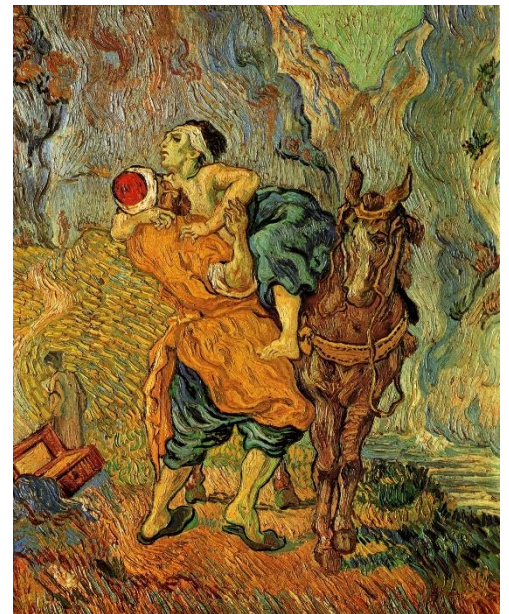
*As God's children, overflowing with His light, we will shine before others to inspire, nurture and bring joy so all may embrace life in its fullness to the glory of God.*

Our Christian value for this half-term is **LOVE**

Please help your child to reflect on the importance of this Christian value.

**Life at Kingsland CE Primary School: life in all its fullness (John 10:10)**

In our Worship Times, we have begun to unpack the Christian value of LOVE. We have pondered questions such as: “Who is your neighbour?” after listening to the Good Samaritan story, and “How can we create more love in the world?” after giving away ‘corners of love’. We have also learned about how Jesus loves all children, irrespective of their circumstances.



**PLEASE DO NOT PLAN HOLIDAYS DURING TERM TIME**

Kingsland CE Primary School, Kingsland, Leominster, Herefordshire HR6 9QN

Telephone: 01568 708436

Email: [admin@kingslandengland.hereford.sch.uk](mailto:admin@kingslandengland.hereford.sch.uk)

Website: [www.kingslandceprimary.com](http://www.kingslandceprimary.com)



### Dates for your diary

|   |  |
|---|--|
| Sunday 19 <sup>th</sup> September           | Education Sunday in Eardisland Church 9.30am               |
| Tuesday 21 <sup>st</sup> September          | KS1 (Y1 and Y2) Parents' Information Evening 3.30 – 4.30pm |
| Tuesday 5 <sup>th</sup> October             | KS2 (Y3/4/5/6) Parents' Information Evening 4.30 – 5.30pm  |
| Wednesday 20 <sup>th</sup> October          | Parents' Evening 3.30 – 6.30pm                             |
| Thursday 21 <sup>st</sup> October           | Parents' Evening 4.30 – 7.30pm                             |
| 25 <sup>th</sup> – 29 <sup>th</sup> October | Half term holiday  |
| Thursday 16 <sup>th</sup> December          | Christmas dinner   |

**The full 2021 - 2022 term dates can be found on the school website following the link:**

<https://www.kingslandceprimary.com/term-dates/>

### Earrings and PE

We send a reminder that children have two options when participating in all PE and swimming activities:

1. Remove earrings (either they do this themselves, or at home before coming to school – school staff are not permitted to remove children's earrings for them)
2. Earrings are taped up securely – children must bring tape from home

As you will understand, these rules are to ensure the safety of the children.

### PE Kit Uniform update

Children in Y4/5/6 who choose to wear leggings / joggers to school on PE days may wear **SHORT PLAIN BLACK SOCKS** instead of the long football socks, on the occasions when shin pads are not required for PE.

Children who choose to wear shorts / skorts should continue to wear the long black football socks. This rule will be relaxed in the summer term only when short black socks will be allowed with shorts / skorts.

### Education Sunday

We shall be celebrating Education Sunday in Eardisland Church on Sunday 19<sup>th</sup> September at 9.30am – all welcome, up to a maximum of 100 people. Please wear face masks inside the church.

### Welcome Party

Thank you to those YR parents who attended the Welcome Party – we hope that you feel welcomed into both the school and church communities.

### After School Clubs

There are a few last remaining places for some After School Clubs – please contact the school office to book a place. Places are allocated on a first-come-first-served basis ... book now to avoid missing out!

### Volunteers

We are delighted to be able to welcome back volunteers into school. If you would like to offer your volunteering services, teachers are always welcoming of support for children to help with reading and times tables. Please contact the school office if you are able to help.

**Congratulations go to the following children who have received Headteacher's Awards:**

**Henry** for super writing about his baby sister; **James** for being a very kind friend – well done!



Every Friday, a child is awarded with “**The Maths Rock**” – this is given to a child who has worked especially hard in maths during the week. Our first winner of this academic year is **Aaron** ... Well done!

### Parents Information Evenings

We are holding two Parent Information Evenings ... an opportunity to learn about the curriculum your child will be learning, and teaching and learning strategies that are used in school.

- KS1 (Y1/2) on Tuesday 21<sup>st</sup> September 3.30 – 4.30pm in the school hall (a ‘crèche’ service will be available to drop children into if required – please contact the school office to book a place - so parents can attend the meeting)
- KS2 (Y3/4/5/6) on Tuesday 5<sup>th</sup> October 4.30 – 5.30pm in the school hall (we are unable to offer a crèche service for this session)

With Covid safety measures in mind, we ask that just ONE parent / carer per child attend each meeting, and that face masks are worn inside the school building.

### Big Question

We continue our series of BIG QUESTIONS as a focus for family discussions. This week’s BIG QUESTION is:

**How can you help to create more love in the world?**



An update from the school governors: this week the Learn to Love committee met to discuss upcoming events – the Welcome Party, Harvest, and Christmas. The Learn to Love committee oversees the Christian ethos side of school life.

### House Tokens

**Congratulations to the following children for achieving a house token!**

| Ambrey                 | Berrington | Croft | Mortimer |
|------------------------|------------|-------|----------|
| Emily<br>Josh<br>Harry |            |       | Millie   |

# Kingsland CE (VA) Primary School

**Deputy Headteacher: Permanent / Variable**

**Salary:** L1 – L6

**Hours:** Full-time (1.0)

**Location:** Kingsland CE Primary School, Kingsland, Leominster, Herefordshire HR6 9QN

**NOR:** 156

**Commencing:** 1<sup>st</sup> January 2022

For further information, to arrange a visit (either Wednesday 15th September at 1.30pm or Monday 27th September at 9.30am) or to request an application pack, please telephone 01568 708436 or email Sue Lewis at [slewis@kingslandengland.hereford.sch.uk](mailto:slewis@kingslandengland.hereford.sch.uk)

## **The Role**

Kingsland CE Primary School is a popular, innovative, high performing, rural church school set in an idyllic Herefordshire village, 3 miles west of Leominster. It is judged by both Ofsted and SIAMS as 'outstanding' in all areas, and provides children with firm foundations based on a strong Christian ethos which permeates everything that we do, as part of our 'rich and vibrant curriculum'. Our recent Ofsted monitoring report states: "... the quality of education provided is exceptional." Kingsland CE Primary School strives to offer all its pupils every opportunity to live life in all its fullness; it has a consistently high academic record with additional strengths in sport and the arts – we are proud to hold the School Games platinum sports' award and the International School Award.

The governors and headteacher require an inspirational and highly motivated Deputy Headteacher. This is an exciting opportunity for an ambitious and aspirational school leader to join our committed team and assist the headteacher in leading this dynamic and forward-thinking school.

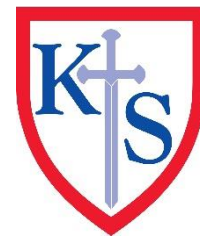
The successful candidate will have excellent subject knowledge, a passion for teaching and learning, high expectations for all children, will support the Christian ethos of the school, and will be willing to go the extra mile.

The successful candidate will also:

- Be an outstanding classroom practitioner with a track record of excellence
- Teach a mixed aged Y5/6 class
- Have the passion and ability to lead mathematics across the school, based on the principles of Teaching for Mastery
- Understand the importance of safeguarding and will embrace the Deputy Designated Safeguarding Lead role
- Be passionate about leading other curriculum areas
- Take a lead in staff professional development opportunities
- Be ambitious and committed to their own professional development
- Bring fresh ideas and opportunities to the school

The school is outwardly thinking and can offer the successful candidate:

- A commitment to their personal professional development
- The opportunity to work in an Ofsted and SIAMS 'outstanding' school



- A supportive and passionate staff team
- The opportunity to take a leading role in the development of the school
- A strong connection between school and church, as well as international links with Tanzania
- Fabulous children with a hard-working and caring attitude
- Dedicated leadership time

We can offer excellent CPD opportunities through our close connection with the Salop, Herefordshire and Wolverhampton (SHaW) Maths Hub, supportive mentorship, and are eager to encourage all teachers to develop as effective school leaders.

This school is committed to safeguarding and promoting the welfare of children and young people and expects all staff and volunteers to share this commitment. All post holders are subject to a satisfactory enhanced Disclosure Barring Service confirmation.

Visits to our school are welcomed. This post is suitable for experienced and aspirational teachers.

**Closing date:** Friday 8<sup>th</sup> October 2021 12.00pm

**Interview date:** Monday 18<sup>th</sup> October 2021



# Kingsland CE Primary School

Let your light shine

"Let your light shine before others that they may see your good deeds and glorify your Father in heaven." Matthew 5:16

Ofsted:  
OUTSTANDING

"... the quality of education provided is exceptional"  
"Pupils' experiences go far beyond what they learn in lessons."  
"Pupils' behaviour exemplifies the aim 'Learn to love.'"  
(Ofsted March 2020)

SIAMS:  
OUTSTANDING

## OPEN MORNINGS

Do you have a child due to start school in September 2022?

You would be most welcome to visit school on one of our Open Mornings  
(please bring a face mask):



Thursday 23<sup>rd</sup> September 9.30am

Tuesday 12<sup>th</sup> October 9.30am

Monday 15<sup>th</sup> November 9.30am

Please contact the school office to book a place  
(bookings are essential): 01568 708436

[admin@kingslandengland.hereford.sch.uk](mailto:admin@kingslandengland.hereford.sch.uk)



# IMPORTANT NOTICE

## Reception admissions for 2022-2023

Do you have a child born between  
1 September 2017 and 31 August 2018

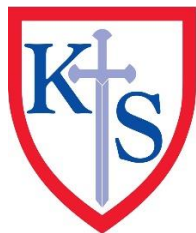
If so you will need to apply for a school place  
by 15 January 2022 (to commence September  
2022)

Applications can be completed from  
**13 September 2021** online  
(scan QR code)



Please note: a place at a nursery does not  
guarantee a place at the associated primary  
school, therefore you must still apply.

For further information please contact the school  
admissions team on 01432 260926 / 261574 or  
[schooladmissions@herefordshire.gov.uk](mailto:schooladmissions@herefordshire.gov.uk)



# Kingsland CE Primary School

Let your light shine

“Let your light shine before others that they may see your good deeds and glorify your Father in heaven.”  
(Matthew 5:16)

## Christian Value Family Reflection

Welcome to our Christian Value Family Reflection which offers some suggestions, thoughts and ways into exploring and reflecting on the value of this half term: **LOVE**



This half term's Christian value is:

# LOVE

Educating for Hope and Aspiration

### A prayer of LOVE

Creator God, Thank you that each of us is precious in your sight, and loved. Help us to feel that love each and every day. May we find that same love for everyone within our class at school and at home so that no one is left out; in Jesus' name. Amen

### A reflection on LOVE by Rev. Julie Read

LOVE IS PATIENT, LOVE IS KIND, IT IS NOT BOASTFUL OR ENVIOUS OR ARROGANT OR RUDE, IT DOES NOT INSIST ON ITS OWN WAY ... St Paul taught about love in a poem in the Bible (you can read it all in I Corinthians Chapter 13). It is about putting someone else first and not ourselves. Sometimes it is easy for us to love others and sometimes it is very difficult. I wonder how you have found that during this “lockdown” time ...?

What a strange journey we have all been on since March when the schools were closed to all but a few, and learning has been at home with our families, with ups and downs along the way. The weather has been pretty good and I hope you were able to get out and see some of the beautiful countryside that we live in and enjoy some outside time more than usual. I know you have missed your friends and your amazing teachers. I think perhaps we have learnt to love without seeing people ... which I think is more difficult, and I have been grateful for deliveries of rainbows, and conversations in the street in Kingsland when I have seen people out enjoying the sunshine.

Coming back together is both exciting and strange as we bring together our different experiences of home schooling and family time.

Jesus told a story, a parable, about love, making sure that everyone is included, everyone is looked after, everyone is safe. It was about a farmer, well a shepherd really, who had 100 sheep, and every night he would call them into the sheepfold (his specially made stone-walled safe place) and count them in 97, 98, 99, 100. One evening he counted them in ... 97, 98, 99 ... but there was one missing. What do you think he did? Did he think “Oh well, I have 99 sheep that's pretty good, I need to care for them”? No .... he left the 99 safely shut up for the night and went out to look for the lost sheep. As the night fell, he found it caught up in a bramble and prizing it loose, he put it over his shoulder and carried it home. THAT IS LOVE, making sure that EVERYONE is safe, and that EVERYONE lives well ... exactly what we aim to do at school.

I wonder if you can look out for everyone in your class as we come back together...? Making sure that everyone is safe, and doesn't get lost in their lessons, everyone has someone to play with, everyone is happy, and perhaps the words that you say to someone could be “HOW CAN I HELP?”

